

## Product Description-TDS

**Product Name:** Methylene Blue

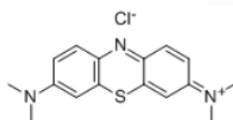
**Product Information**

CAS No: 161-73-4

Molecular Formula: C<sub>16</sub>H<sub>18</sub>ClN<sub>3</sub>S

Molecular Weight: 319.85

Molecular Structure:



**Other Items:**



Item	Specifications
Appearance	Brown powder
Purity	97%~103%
Insoluble	≤ 4%
Moisture	≤ 5%
Water Solubility	30 g/L (20 °C)

**Package:**

25kg/drum

**Application:**

Mainly used for dyeing cotton, acrylic, hemp, and silk, with a poor fastness and a sun fastness of 2-3. It is also used for dyeing paper, coloring bamboo and wood, making ink and color deposits, and dyeing biological and bacterial tissues.

**Storage:**

Store in tightly closed containers, cool and dry. Protect from heat, oxygen and light.